

**TALLER 2. ESTRUCTURAS**  
**Estructuras de Hormigón. EHE**

---

**UNIDAD 2**

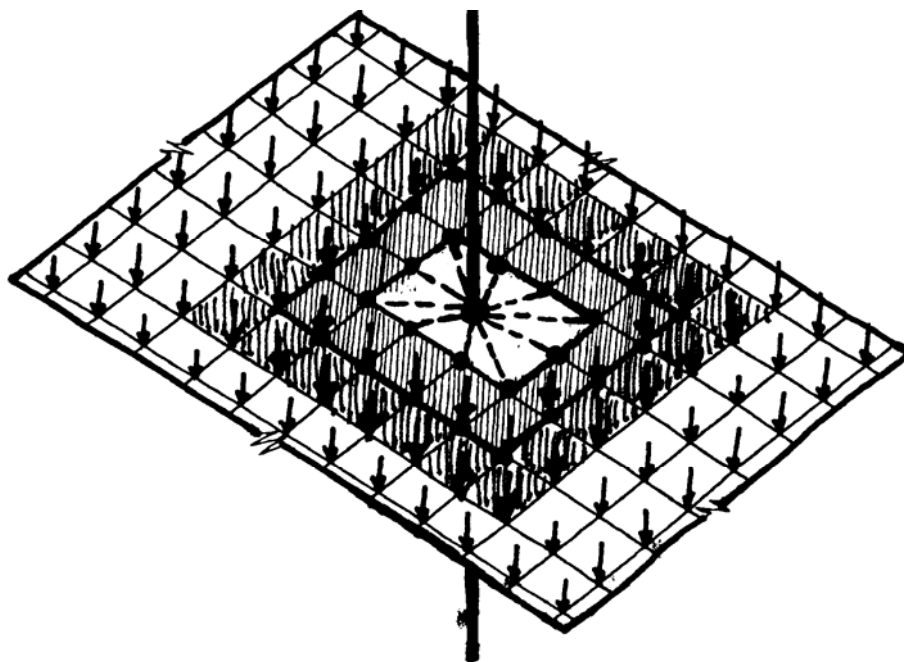
**TIPOS ESTRUCTURALES**

**ESTRUCTURAS BIDIRECCIONALES**

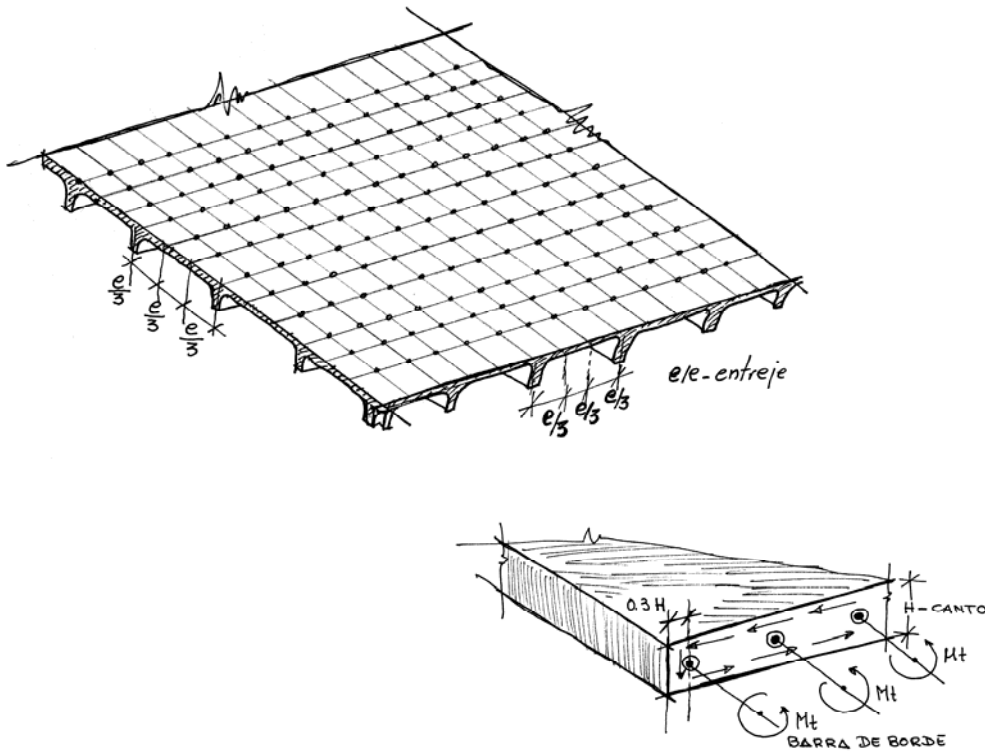
Enrique Vazquez Vicente  
Prof. Asoc. Universidad de Sevilla

1

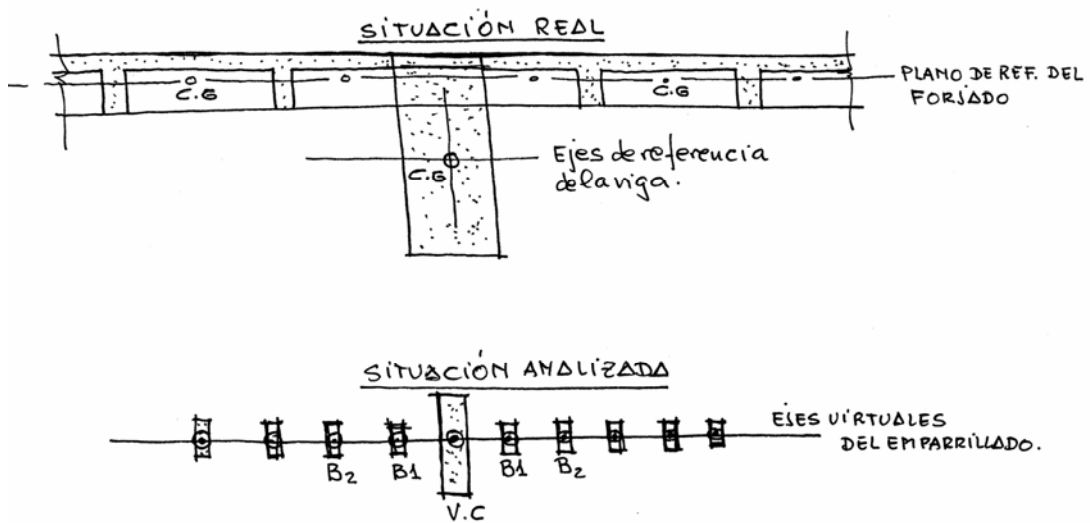
**Discretización**



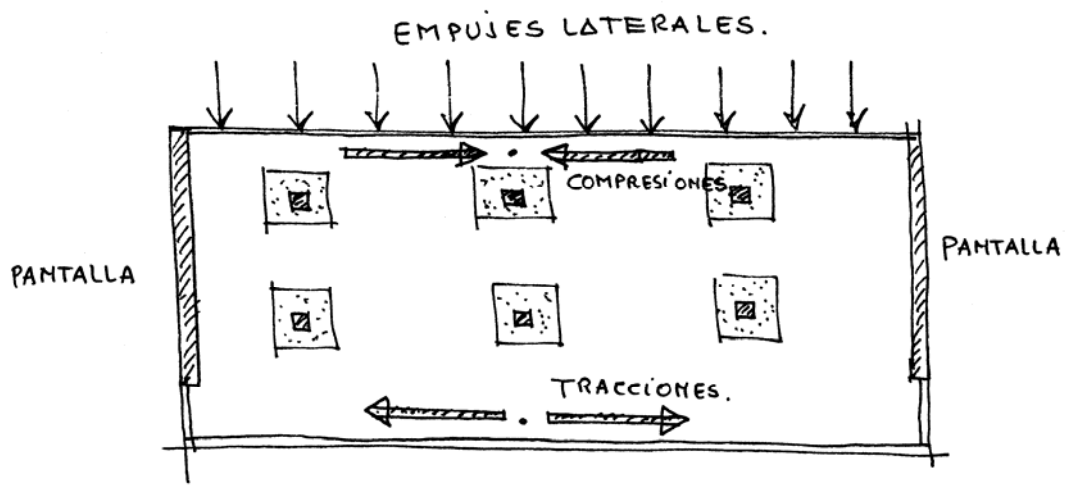
# Discretización



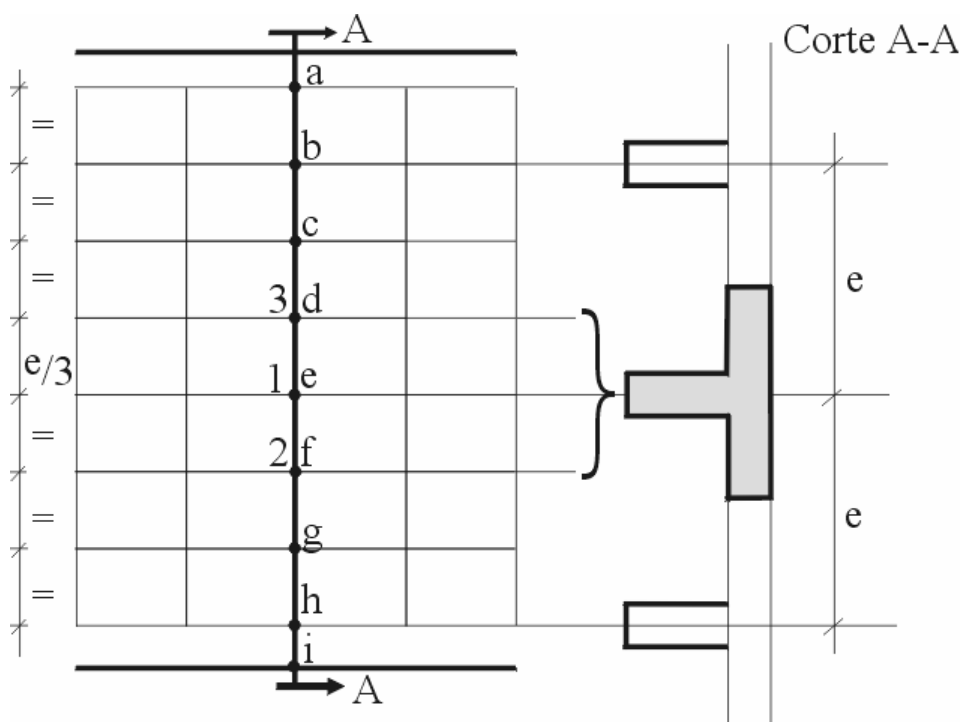
# Discretización



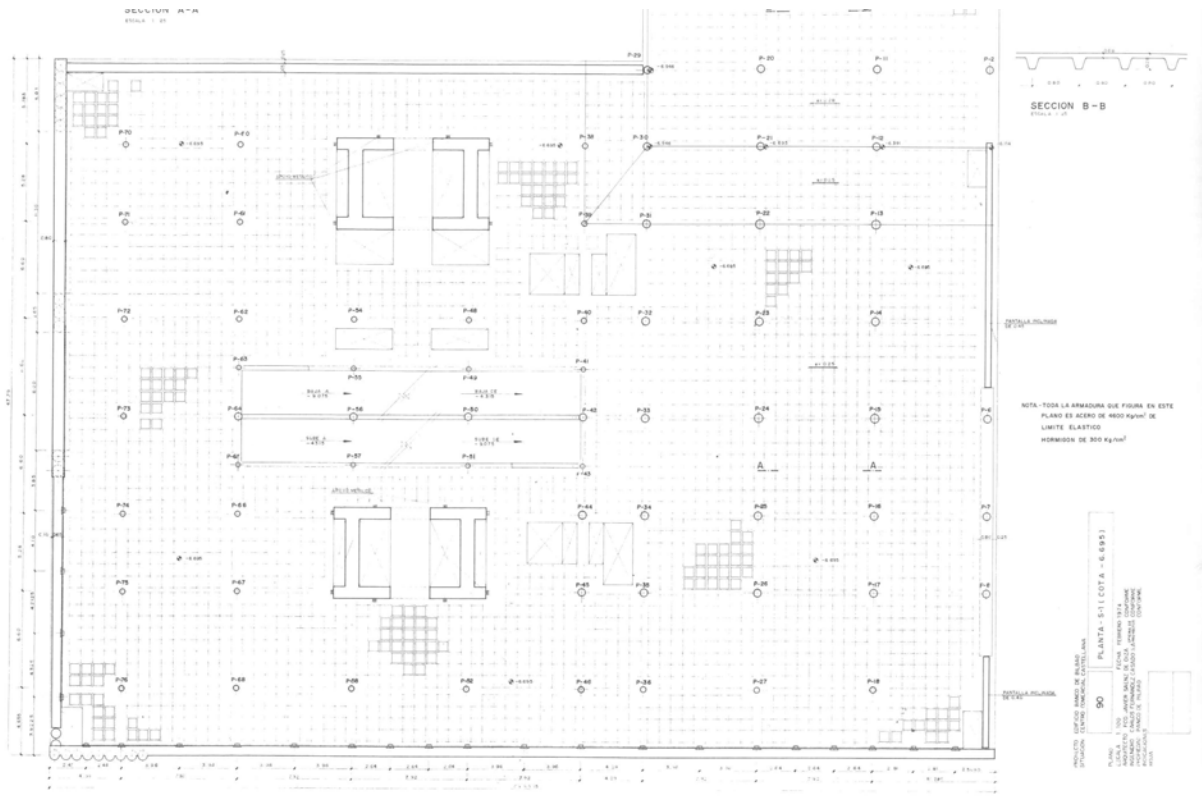
## Discretización



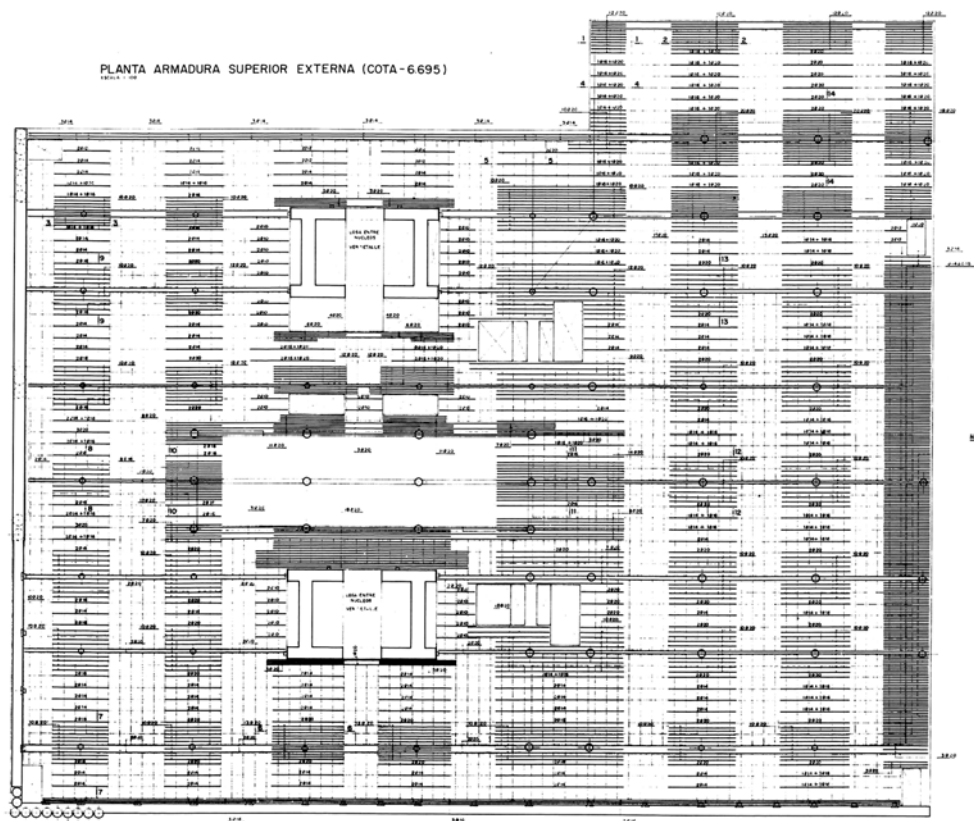
## Armado



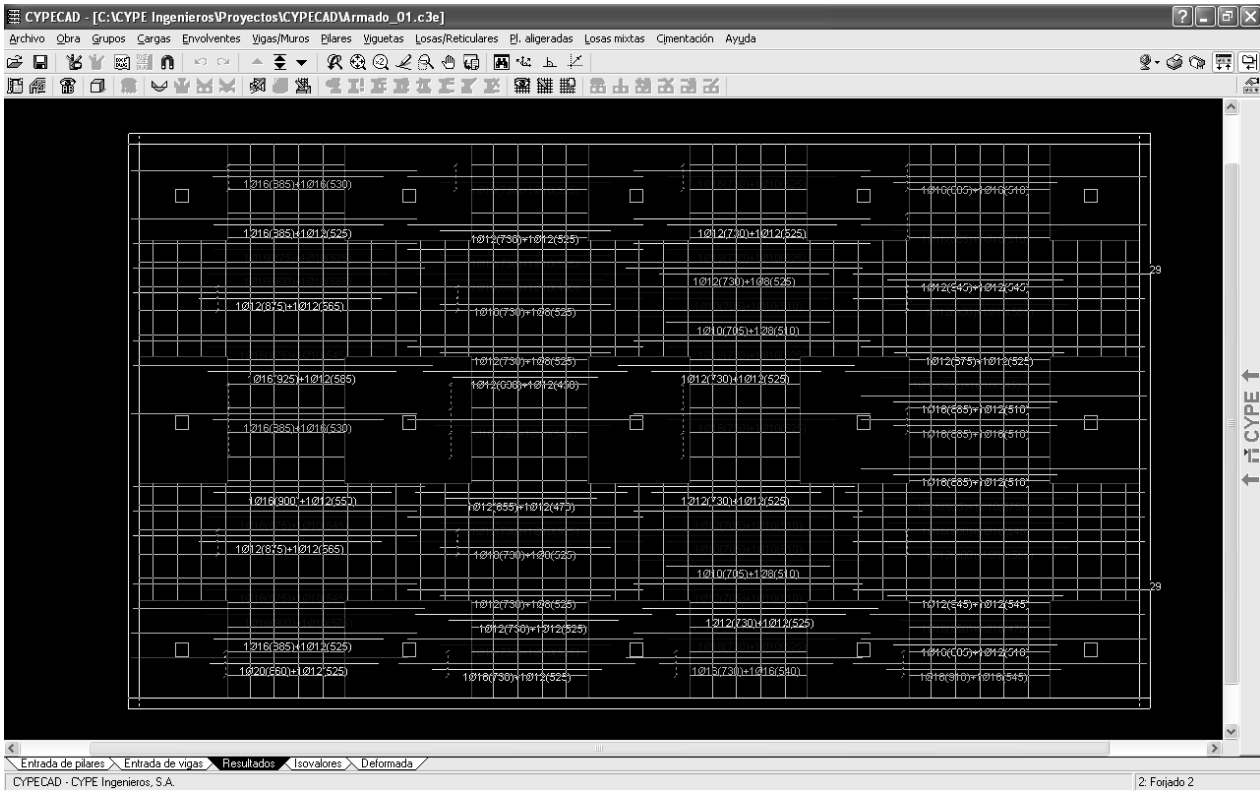
# Armado



# Armado

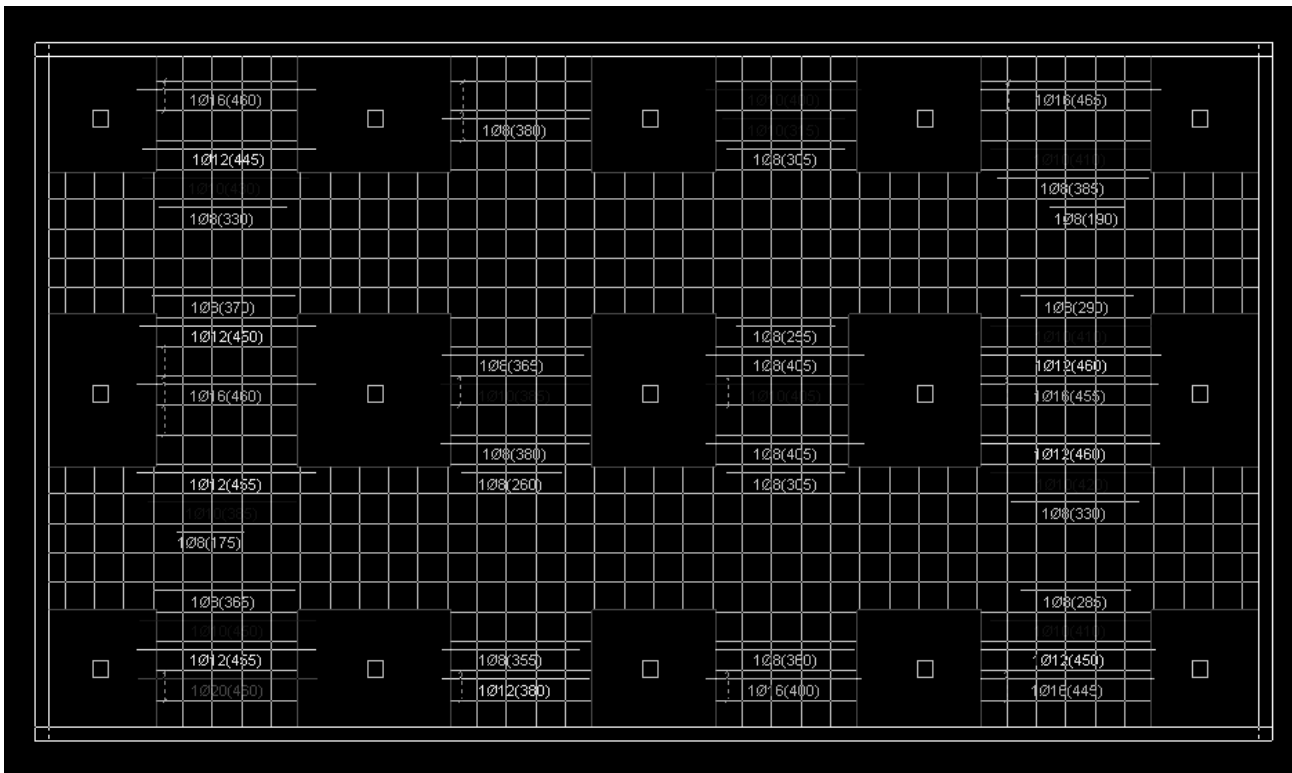


# Armado



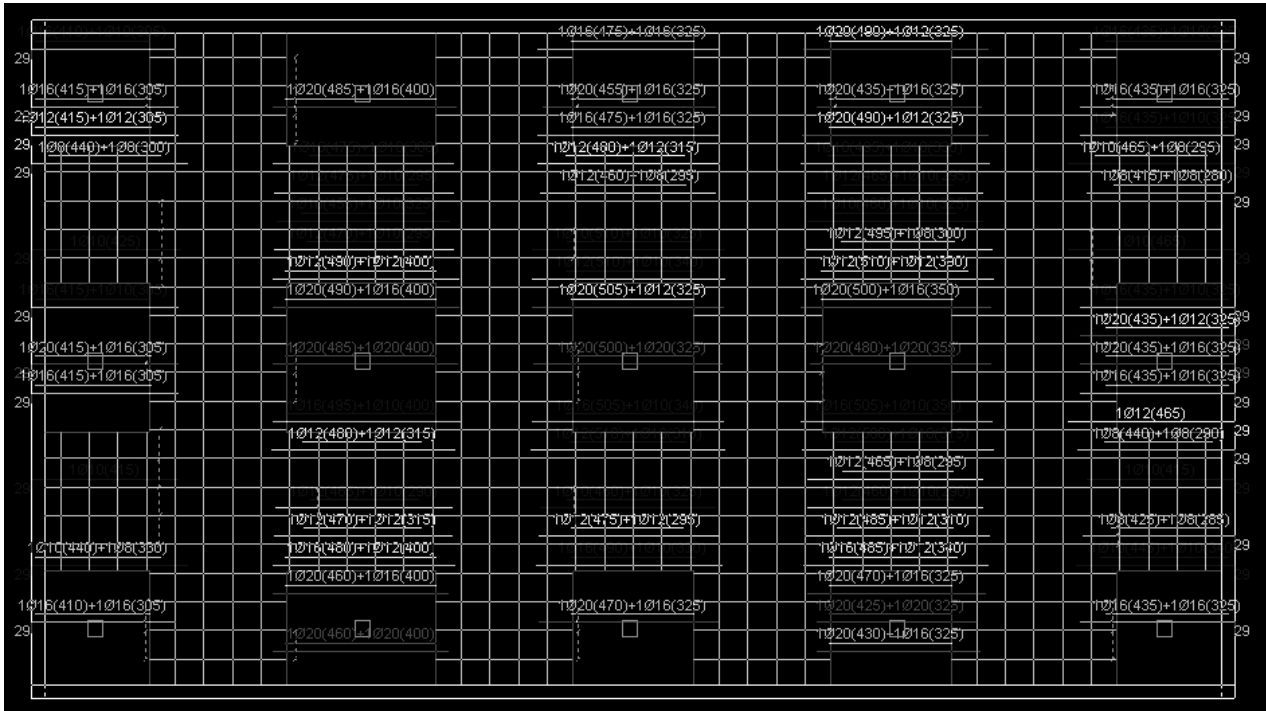
Sin armadura base. Cuantía Total 13 Kg/m<sup>2</sup>

# Armado



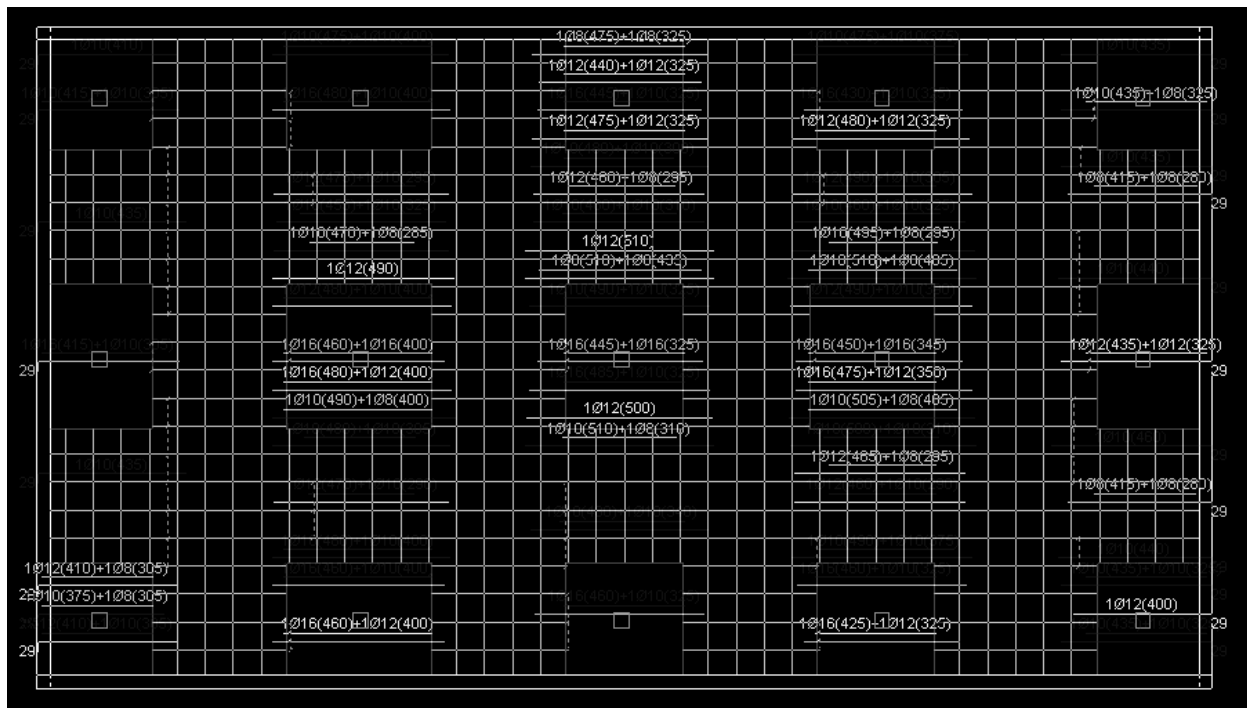
Armadura base: 1Ø16 inf. Cuantía Total: 12.54 Kg/m<sup>2</sup>

# Armado



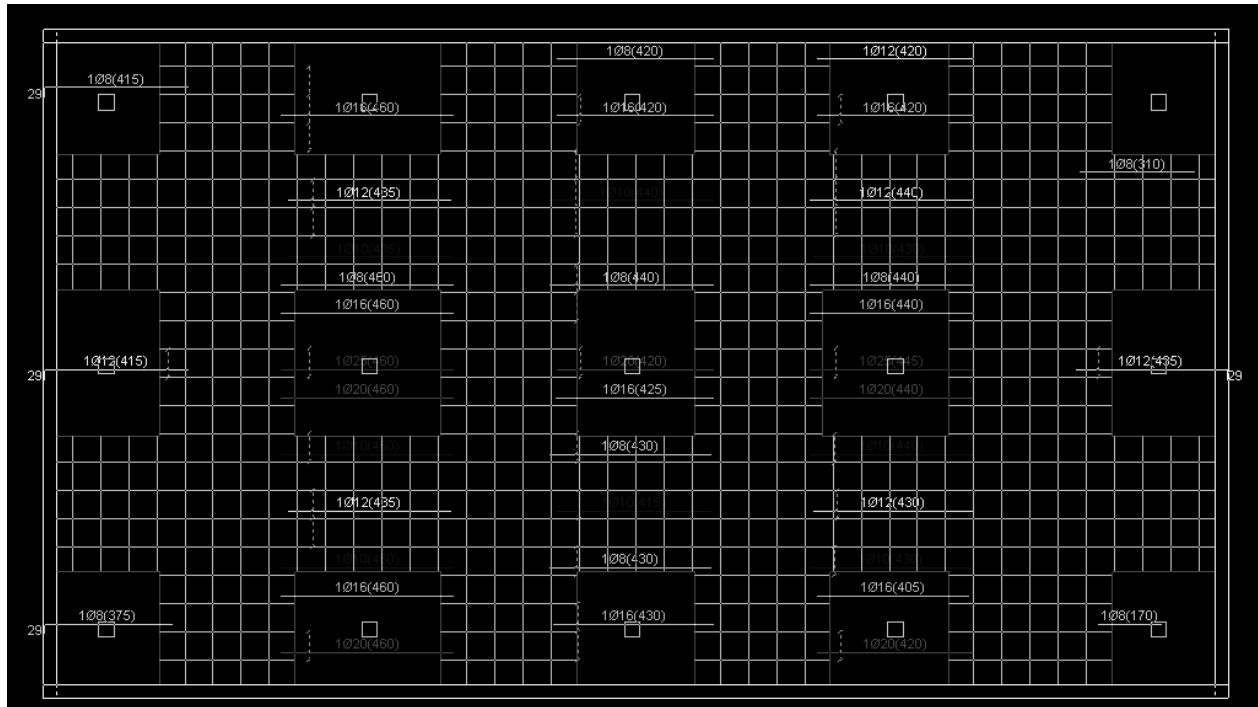
Sin armadura base sup. Armadura base sup. de abacos: 2Ø10 sup.  
 Cuantía Total: 12.54 Kg/m<sup>2</sup>

# Armado



Sin armadura base sup. Armadura base sup. de abacos: 2Ø16 sup.  
 Cuantía Total: 11.95 Kg/m<sup>2</sup>

# Armado



Armadura base: 1Ø10 sup. Armadura base sup. de abacos: 2Ø16 sup.  
 Cantidad Total: 12.64 Kg/m<sup>2</sup>

# Armado

**CUANTÍAS TOTALES DE ARMADURA: FLEXIÓN+PUNZONAMIENTO+ZUNCHOS**  
**TOTAL WEIGHT OF REINFORCEMENT: FLEXURE+PUNCHING**

L(m)	kg/m <sup>2</sup>										
	L/h										
	18	19	20	21	22	23	24	25	26	27	28
4.00	10.74	11.21	11.69	12.16	12.63	13.10	13.57	14.03	14.50	14.96	15.43
5.00	11.92	12.42	12.92	13.41	13.90	14.40	14.88	15.37	15.86	16.34	16.83
6.00	13.48	14.02	14.55	15.08	15.61	16.14	16.67	17.19	17.71	18.23	18.75
7.00	15.45	16.04	16.62	17.21	17.78	18.36	18.94	19.51	20.08	20.65	21.21
8.00	17.54	18.19	18.83	19.47	20.10	20.73	21.36	21.98	22.61	23.23	23.84
9.00	19.95	20.66	21.36	22.06	22.76	23.45	24.14	24.82	25.51	26.19	26.86
10.00	22.43	23.20	23.97	24.74	25.50	26.25	27.00	27.75	28.49	29.23	29.97

Cuantías totales de armadura en forjado reticular con casetones recuperables. Tomada de: "Estimación de cuantías en forjados de edificación" J. Calavera, E. Gonzalez. Cuadernos Intemac, nº51. 2003

# Deformaciones

